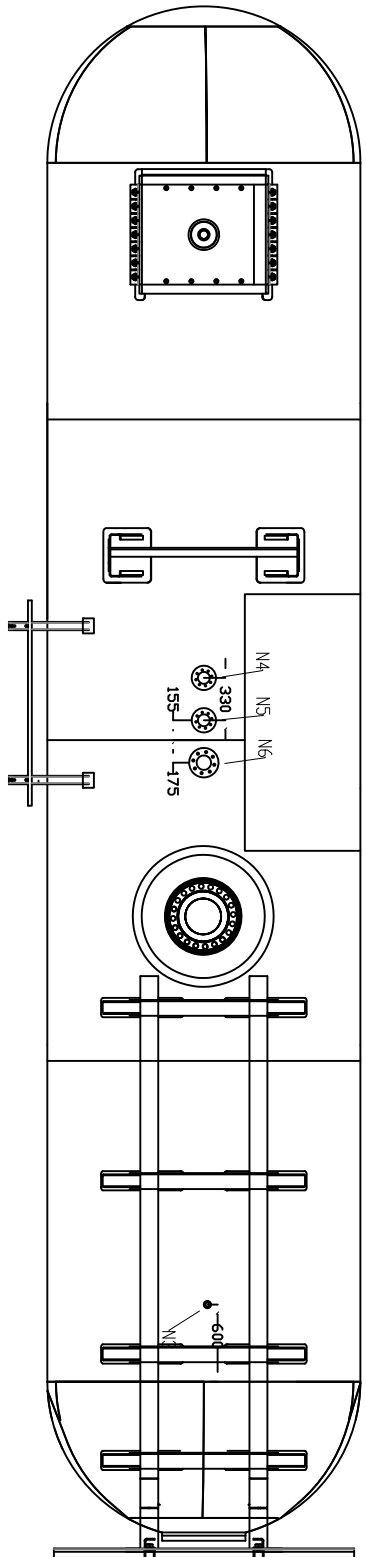
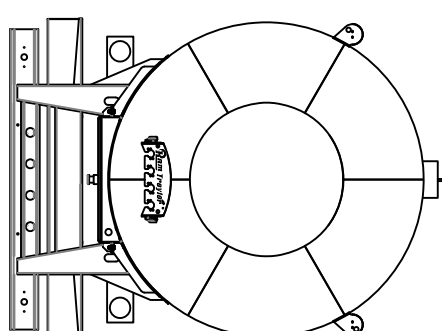
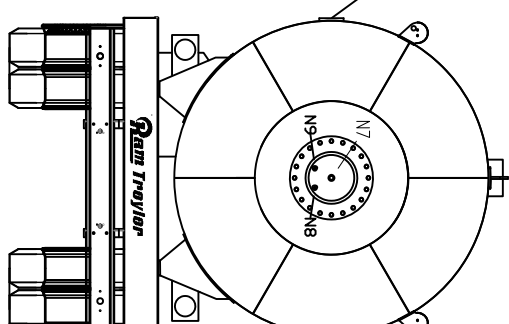


Empty Weight 4550 Kg
Total Weight 14500 Kg

Empty Weight 2650 Kg
Total Weight 8300 Kg

2650 Kg
8300 Kg



Tank terozideyken akslara ve tabloya
gelesen yük asagidaki gibidir.

Empty Weight	12500 Kg
King Pin	4550 Kg
1Axle	2650 Kg
2Axle	2650 Kg
3Axle	2650 Kg

Total Weight	39500 Kg
King Pin	14600 Kg
1Axle	8300 Kg
2Axle	8300 Kg
3Axle	8300 Kg

NO	ADET	SEGMENT ADI	MALZEME	STANDART	DL ÇÖL END/ RME
N1	1	2 ^o Emniyet Ventili	P460NL1	EN10028-2	90*60,3*50
N2	1	2 ^o Emniyet Ventili	P460NL1	EN10028-2	90*60,3*50
N3	1	1 1/4" Drain	P460NL1	EN10028-2	57*42,4*42
N4	1	2 ^o Faz Blok Flans	P460NL1	EN10028-2	190*94*42
N5	1	2 ^o Gaz Blok Flans	P460NL1	EN10028-2	190*94*42
N6	1	3 ^o Likid Dolun B. Flans	P460NL1	EN10028-2	215*114,5*42
N7	1	Kotageç	P460NL1	EN10028-2	48*31*42
N8	1	Manometre	P460NL1	EN10028-2	38*17*55
N9	1	Termometre	P460NL1	EN10028-2	38*17*55
N10	1	Rochester	P460NL1	EN10028-2	190*80*55
M1	1	Mehol İç Flans	P460NL1	EN10028-2	650*430*50
M2	1	Mehol Dis Flans	P460NL1	EN10028-2	650*430*40

Design Code	EN 12493
Geometric Volume	52 000 lt
Design Pressure	17,5 BAR
Design Temperature	-20°C/+50°C
Tank Material	P460NL1
Shell Thickness	8,5 mm
Head Thickness	8,5 mm
Test Pressure	26,5 BAR
Welding Factor	1
RT	1/25
Heat Treatment	VT
	1:100
	Head

TANIM / DESCRIPTION
52 m3 Transport Tank

<p>©+90 552 642 12 84 www.raintrolley.com</p>		TASARLAYAN/DESIGNED BY		TARİH		İMZA		IS NO		RESİM NO		DRAWING NO	
QIZEN	ONAY	APPROVED BY										T0052LX1	

8 / 6 / 5 / 4 / 3 / 2 / 1